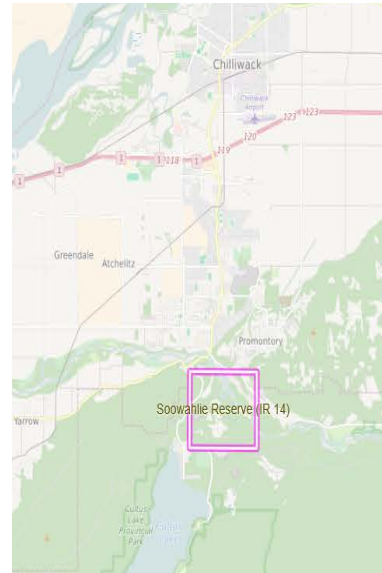


# The'wá:lí Community Digital Map



# The'wá:lí Community Digital Map

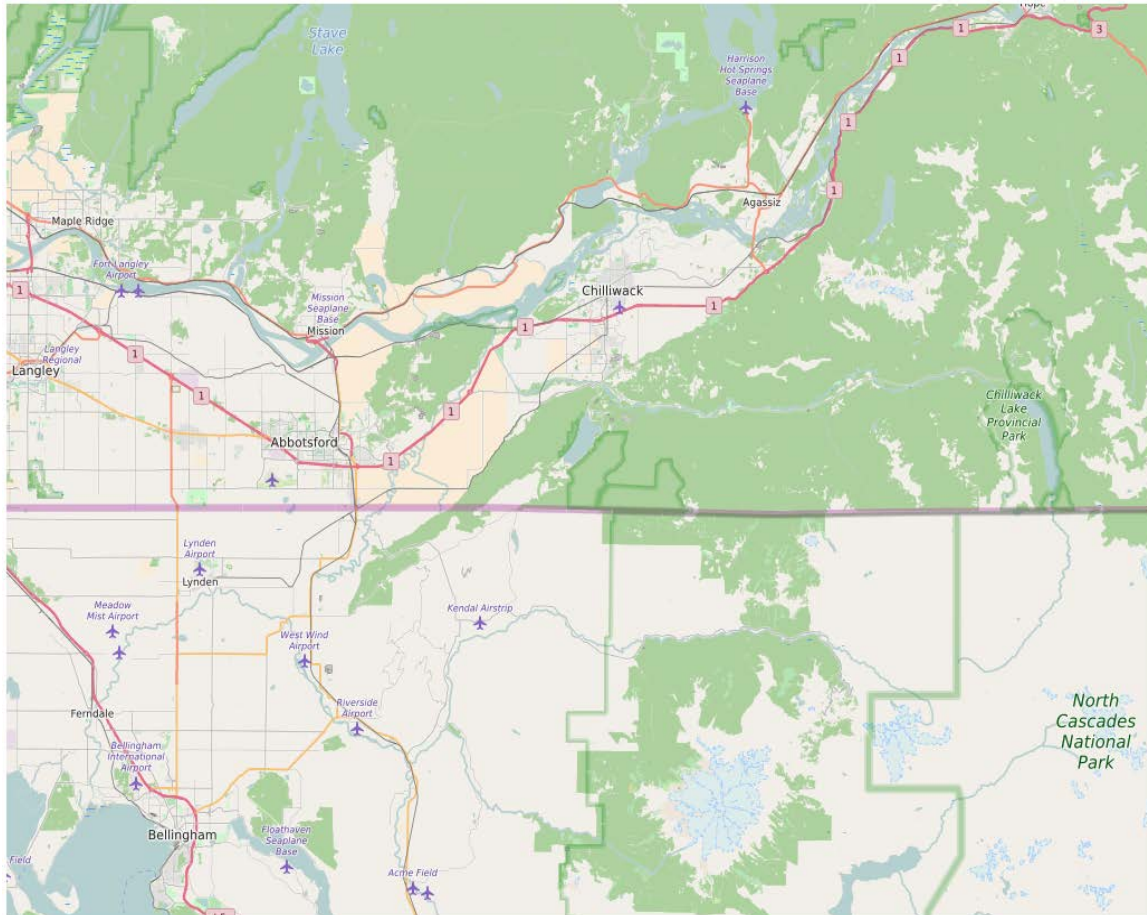
a digital, storied map of The'wá:lí's reserve and  
traditional places

By Sabina Trimble and the The'wá:lí community

<http://hcmc.uvic.ca/~thewali/>

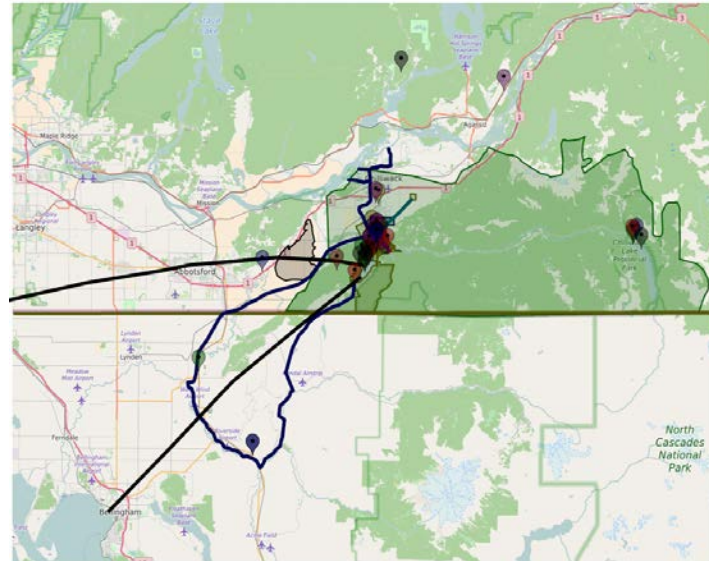
Martin Holmes, Humanities Computing and Media Centre

# Map area



# Content

- *95 places* organized into *11 categories*
- Places may be points, lines, polygons, or sets of these
- *92 panels* (short articles), including
- *102 images*
- *78 audio files*





# Find a place...

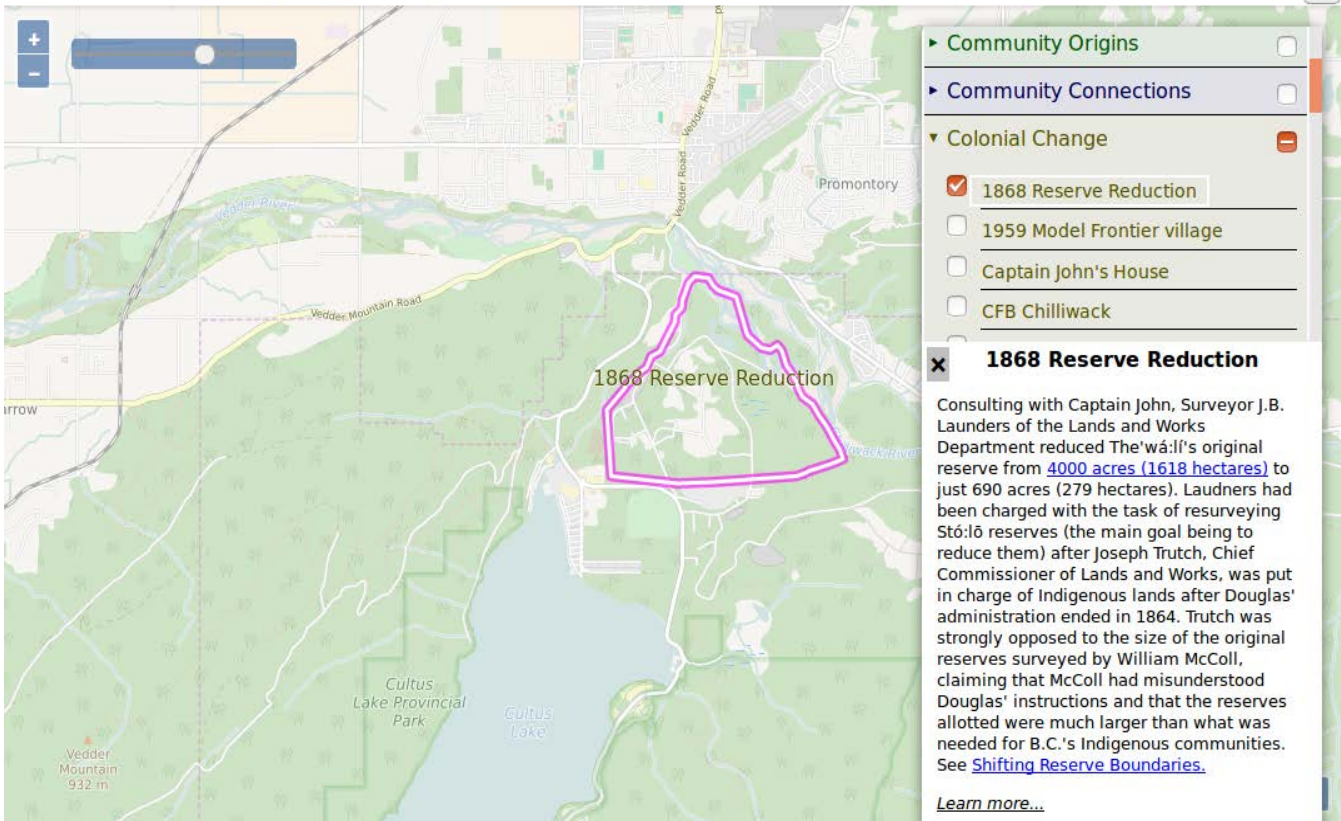
## The'wá:łí Community Digital Map

The screenshot displays a digital map interface for 'The'wá:łí Community Digital Map'. The map shows a green landscape with a large blue lake (Cultus Lake) and a pink outline highlighting the '1868 Reserve Reduction' area. The sidebar on the right, titled 'Locations by category', lists various locations with checkboxes indicating their selection status.

Category	Location	Selected	
Colonial Change	1868 Reserve Reduction	<input checked="" type="checkbox"/>	
	1959 Model Frontier village	<input type="checkbox"/>	
	Captain John's House	<input type="checkbox"/>	
	CFB Chilliwack	<input type="checkbox"/>	
	Columbia Valley Highway	<input type="checkbox"/>	
	Coqualeetza Industrial Institute	<input type="checkbox"/>	
	Cultus Lake Park	<input type="checkbox"/>	
	Cultus Lake Provincial Park	<input type="checkbox"/>	
	Cultus Lake Waterpark	<input type="checkbox"/>	
	DND Shooting Range	<input type="checkbox"/>	
	Farming on Soowahlie Reserve	<input type="checkbox"/>	
	Grass Reserve	<input type="checkbox"/>	
		<input type="checkbox"/>	
		<input type="checkbox"/>	

# See info...

## The'wá:lí Community Digital Map



**Community Origins**

**Community Connections**

**Colonial Change**

- 1868 Reserve Reduction
- 1959 Model Frontier village
- Captain John's House
- CFB Chilliwack

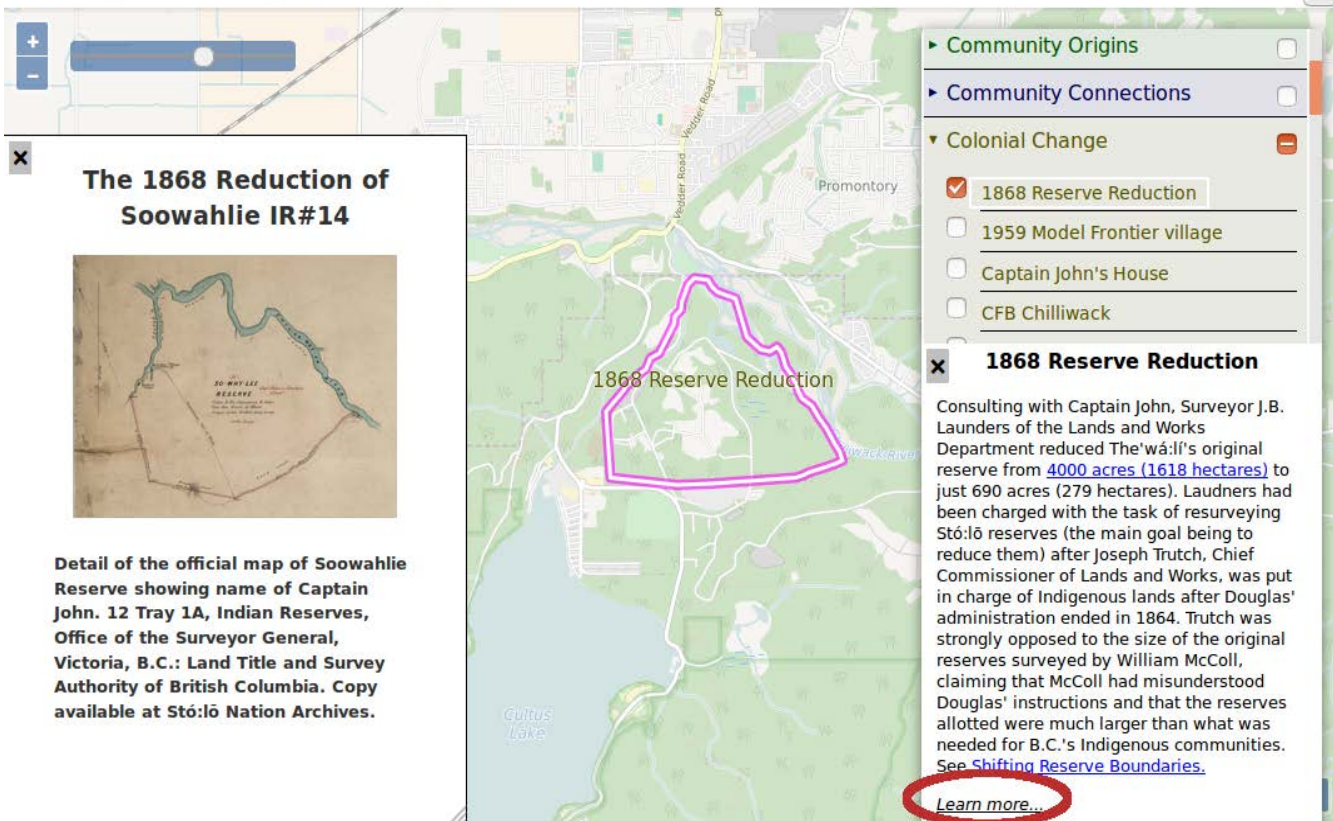
**x 1868 Reserve Reduction**

Consulting with Captain John, Surveyor J.B. Launders of the Lands and Works Department reduced The'wá:lí's original reserve from **4000 acres (1618 hectares)** to just **690 acres (279 hectares)**. Laudners had been charged with the task of resurveying Stó:lō reserves (the main goal being to reduce them) after Joseph Trutch, Chief Commissioner of Lands and Works, was put in charge of Indigenous lands after Douglas' administration ended in 1864. Trutch was strongly opposed to the size of the original reserves surveyed by William McColl, claiming that McColl had misunderstood Douglas' instructions and that the reserves allotted were much larger than what was needed for B.C.'s Indigenous communities. See [Shifting Reserve Boundaries](#).


[Learn more...](#)

# Learn more

## The'wá:lí Community Digital Map



**The 1868 Reduction of Soowahlie IR#14**



**Detail of the official map of Soowahlie Reserve showing name of Captain John. 12 Tray 1A, Indian Reserves, Office of the Surveyor General, Victoria, B.C.: Land Title and Survey Authority of British Columbia. Copy available at Stó:lō Nation Archives.**

- Community Origins
- Community Connections
- Colonial Change
  - 1868 Reserve Reduction
  - 1959 Model Frontier village
  - Captain John's House
  - CFB Chilliwack

**1868 Reserve Reduction**

Consulting with Captain John, Surveyor J.B. Lauders of the Lands and Works Department reduced The'wá:lí's original reserve from **4000 acres (1618 hectares)** to just 690 acres (279 hectares). Lauders had been charged with the task of resurveying Stó:lō reserves (the main goal being to reduce them) after Joseph Trutch, Chief Commissioner of Lands and Works, was put in charge of Indigenous lands after Douglas' administration ended in 1864. Trutch was strongly opposed to the size of the original reserves surveyed by William McColl, claiming that McColl had misunderstood Douglas' instructions and that the reserves allotted were much larger than what was needed for B.C.'s Indigenous communities. See [Shifting Reserve Boundaries](#).

[Learn more...](#)

# Demo

- <http://hcmc.uvic.ca/~thewali/>
- <http://hcmc.uvic.ca/~thewali/?draw=true>



# Tech details

- All open-source
- OpenLayers 3.0 + custom code
- Map tiles built from OpenStreetmaps data
- Standalone if necessary (works without the web)
- Data is in TEI XML and XHTML.